

**'New Yorker 50' Short Track Super Series (STSS) Modified Rules & Procedures
Utica-Rome Speedway/Vernon, N.Y.
Sunday, Sept. 3**

*Bob Hilbert Sportswear Short Track Super Series Fueled By Sunoco
River Valley Builders North Region Event No. 9
Ollie's 'Elite Series' Event No. 2*

Engines & Weights:

Big- and Small-Block engines: 2,400 lbs.

Wegner LS 427 'Weekend Warrior' Spec: 2,350 lbs.

PA/NJ/DIRTcar Spec Small-Block – open carburetor (methanol): 2,350 lbs.

CT 525: 2,300 lbs.

PA/NJ/DIRTcar Spec Small-Block – open carburetor (gasoline): 2,275 lbs.

W-16: 2,250 lbs.

**All weights are track-scale pounds, taken post-race with driver in car*

**No small-block engine can surpass 450 cubic inches. Steel-blocks only with exception of combinations noted above.*

General Rules: General rules for the 2023 'Elite' Series have been posted at the following link: <https://shorttracksuperseries.com/wp-content/uploads/2023/01/2023STSSModifiedEliteSeriesRules.pdf>

Body Rules:

Sail panels are permitted for the 'New Yorker 50' event. Sail panels must be even and mirror each other in size and shape, side-for-side. Maximum height when measured from the ground is 65 inches. Sail panels must extend no further forward than the rear of the driver's seat and no further back than the end of the quarter-panel. *There will be no alterations (louvers, cut-outs, etc.) permitted to the sail panels.* A roof spoiler/wickerbill, no taller than four inches, is permitted.

Door heights are as follows: maximum height of 41 inches on the left side and 40 inches on the right when measured 60 inches forward from the centerline of the rear axle.

Left-Side Measurement Points:

16 inches forward from centerline of rear axle: 45 inches maximum, 37 inches minimum

60 inches forward from centerline of rear axle: 41 inches maximum, 36 inches minimum

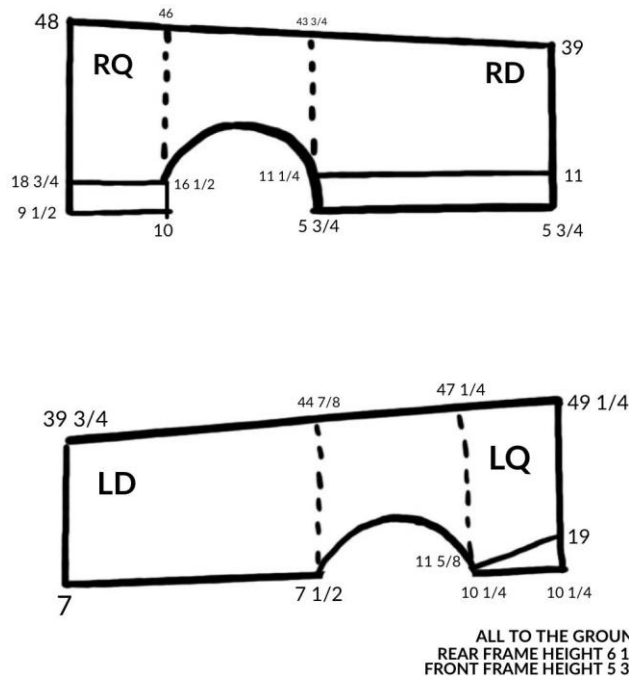
Right-Side Measurement Points:

16 inches forward from centerline of rear axle: 44 inches maximum, 36 inches minimum

60 inches forward from centerline of rear axle: 40 inches maximum, 35 inches minimum

There cannot be more than a one-inch difference from left door to right door in split when measured from the ground.

Please reference the diagram below for STSS door dimensions:



The maximum combined length of door and quarter together, front to back, is as follows:

- *Left Side:* 11 feet, 4.5 inches on the top of the combined door/quarter; 11 feet, 5 inches on the bottom of the combined door/quarter
- *Right Side:* 11 feet, 3 inches on both the top and bottom of the combined door/quarter

Rear spoiler rule maximum height: 50 inches – must be even from left to right. Minimum ground clearance of 6 inches in door skirting and 8-inch minimum for rear quarter-panel skirting.

Maximum body width, when measured at any point along the body line from front-to-back will be a maximum of 68 inches and minimum of 64 inches.

Aluminum surrounding fuel cell is optional for the Short Track Super Series.

*All other measurements are to mirror the standard for Northeast dirt Modified racing. **Short Track Super Series officials have final decision on all discrepancies.***

Fuel:

Sunoco is the preferred fuel of the Bob Hilbert Sportswear Short Track Super Series. Sunoco 110, 112, HCR (114 octane) or equivalent ONLY.

Tires:

Right-Rear: American Racer 48 compound or harder
Left-Rear: American Racer 44 compound or harder
Right-Front: American Racer 38 compound or harder

Left-Front: Any American Racer compound

Any track or series stamp is permitted. No specialty or block-tread tires. No softening or chemically altering of tires.

Durometer readings will be taken after all events. Outliers are subject to laboratory testing.

Lineup Procedure:

Drivers will draw for starting positions in 15-lap Qualifying Races. Top qualifiers will transfer to the redraw for the 50-lap main. The remainder of the Qualifying Race transfers will be lined up head's-up. B-Mains (8 laps) and provisional starters will set the 'New Yorker 50' starting grid.

Car Count	Number of Qualifying Races	Redraw	Qualify	Number of B-Mains	Qualify from B-Main
<i>Up to 45</i>	3	4	7	1	5
<i>46-60</i>	4	3	5	2	3
<i>61-80</i>	5	2	4	2	3
<i>81-Plus</i>	6	2	3	3	3

Provisionals:

There will be a total of five (5) provisionals available for this event. The two-highest-ranked drivers from current STSS Ollie's 'Elite' Series standings unable to qualify (*half green money*), two-highest ranked drivers from current STSS River Valley Builders North Region standings unable to qualify (*half green money*) and highest-ranked driver from Utica-Rome Speedway (*relinquish green money*) unable to qualify will be eligible for provisional starting positions.

Starts & Restarts:

All Qualifying Race and consolation restarts are double-file. Feature events will go double-file until five (5) laps remaining. All starts and restarts occur in the Sunoco Race Fuels Start Zone. After the completion of one (1) lap, the leader may choose inside or outside. Lapped cars drop to the rear in the order they are running. The highest-running lapped car at the time of a caution will be waved around at the time of a caution and get a lap back.

Transponders:

AMB Transponders are REQUIRED for the 'New Yorker 50' event.

One-Way Radios:

One-way radios are mandatory. Frequency is 454.000.

Car Registration/Temporary Membership:

The early entry fee/registration is \$40 (prior to Sept. 3) or \$50 (Race Day).

Point Distribution:

The 'New Yorker 50' operates on the 100-point structure.

Disqualifications:

Drivers who are disqualified forfeit monies earned and points accrued for said Short Track Super Series event. Drivers who are disqualified will receive DNQ points for said event. In the event of a disqualification, all drivers behind the DQ car will be moved up a position and will be compensated as such with points and payout.

Social Media Conduct:

Competitors on the Short Track Super Series are independent contractors compensated by the series via purse and point fund monies. Competitors are expected to uphold the integrity of this business relationship in all posts on social media. Any posts viewed as detrimental to the series, its officials, host facilities or marketing partners could result in a fine and/or suspension from competition on the series.

Contingency Decals:

To be eligible for payout and/or point fund monies, all cars ***must*** be outfitted with the following decals: Short Track Super Series, Sunoco Race Fuels and American Racer. Decals of any competing brands must be concealed during Short Track Super Series events.

ALL RULES ARE SUBJECT TO CHANGE AT ANY TIME BY MANAGEMENT OF THE SHORT TRACK SUPER SERIES TO ENSURE COMPETITIVE BALANCE. ALL OFFICIALS' DECISIONS ARE FINAL!